



Vallabh[®]

LTC[®]

ARMY[®]

2020-2021
PRODUCT CATALOGUE



Krishna Electricals (Regd.)
APPLIANCES DIVISION, INDIA



www.krishnaappliances.com



krishnaelectricalappliances@yahoo.com

Mfrs. Electric Iron | Hand Blender | Chopper | Mixer-Grinder | Fly-Killer Etc.

Vallabh[®]

LTC[®]

ARMY[®]

SINCE

1989



Vallabh[®]

LTC[®]

ARMY[®]

About **KRISHNA APPLIANCES**

Incepted in the year 1989, at Samana Distt. Patiala (Punjab, India), we are counted amongst the pioneer manufacturer and supplier of a widespread range of Industrial electric iron, Domestic Heavy & Light weight electric iron, hand blender, chopper, Mixer-Grinder, Flying Insect Killer & Importer of Gravity feed Industrial steam iron. Owing to rich industry experience, now we are successfully providing our clients the best and unmatched quality appliances that are in confirmation with the international quality standards. We have attained a distinct position in the industry by manufacturing and marketing highly durable and reliable range of appliances. Presently, we are offering various types of Electric iron, Hand Blender, Chopper, Mixer-Grinder & Flying Insect Killer to cater the variegated demands of the market. All our offered appliances have experienced widespread in the domestic market due to features like optimum performance, longer service life, energy efficiency and dependability. We firmly believe that the quality, commitment and ethical values are the engines of growth for any organization and thus, work accordingly. Our efficient team of quality controllers inspects these appliances on various parameters and never compromise on any aspect of the quality of the entire range. Right from procurement of raw material till final dispatch, we conduct personalized double quality check to make sure that our clients avail only flawless home appliances.



INDUSTRIAL IRON

KE-13 & KE-17 POUND

IDEAL FOR
DRYCLEANERS & HOSIERY HOUSES

SPECIFICATIONS

1. Automatic Laundry Specially designed for DRY CLEANERS and HOSIERY
2. 17 pond & 13 Pond
3. Power
 - a. KE-17 pond – 1500W
 - b. KE-13 pond – 1250W
4. Operating Voltage: 220 – 240 volts
5. CAST IRON sole plate
6. Heavy Weight
7. Super clean surface finish
8. Cool touch handle with comfortable grip
9. Reliable snap action thermostat.



Sleek-9

POUND

**AUTOMATIC LAUNDRY SPECIALLY
DESIGNED FOR TAILORS & BOUTIQUES.**

SPECIFICATIONS

1. Power-1000W
2. Operating Voltage: 220 – 240 volts
3. CAST IRON sole plate
4. Heavy Weight
5. Super clean surface finish
6. cool touch handle with comfortable
7. Reliable snap action thermostat
8. One year Warranty.



Vallabh[®] **LTC**[®] **ARMY**[®]

Laundry

Tailoring Iron

SPECIFICATIONS

1. Non-Automatic Laundry for Tailors and Boutiques.
2. Power-600W
3. Operating Voltage: 220 – 240 Volts
4. The best quality heating element made out of imported wires.
5. Thick caste iron plate at the bottom polished to mirror finish.
6. Strong Bakelite handle.
7. Heavy duty brass pins, Earthing cup for electrical connections.
8. Black painted cast iron upper body.



Vallabh[®] LTC[®] ARMY[®]

Gravity Feed

Industrial Steam Iron

KE-96

Specifications

1. Internationally certified electric and electronics parts used (CE, VDE, CSA, CQC).
2. More comfortable urethane handle.
3. A soft-touch-styled button switch of superb convenience.
4. Sharper body design & modern black color.
5. Improved steam quality with **1200W**.
6. Designed in Taiwan.



Vallabh®

LTC®

ARMY®

Specifications

1. Internationally certified electric and electronics parts used (CE, VDE, CSA, CQC).
2. More comfortable urethane handle.
3. A soft-touch-styled button switch of superb convenience.
4. Sharper body design & modern black color.
5. Improved steam quality with **1600W**.
6. Designed in Taiwan.

Vallabh[®]

LTC[®]

ARMY[®]

KE-980



Specifications

1. Internationally certified electric and electronics parts used (CE, VDE, CSA, CQC).
2. More comfortable urethane handle.
3. A soft-touch-styled button switch of superb convenience.
4. Sharper body design & modern black color.
5. Improved steam quality with **1600W**.
6. Designed in Taiwan.

Vallabh[®]

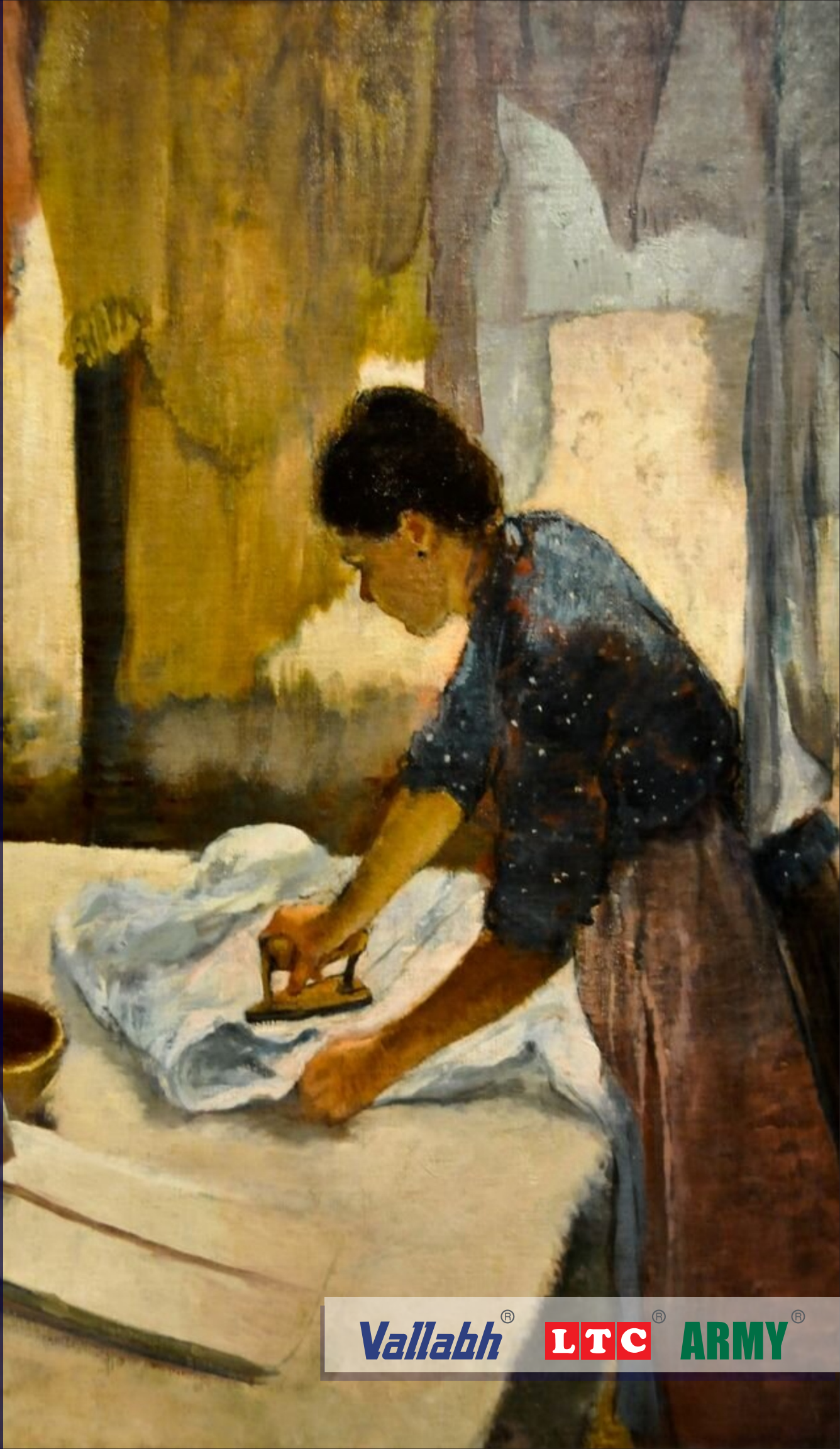
LTC[®]

ARMY[®]

KE-300L



Domestic Heavy Weight Iron



Vallabh[®]

LTC[®]

ARMY[®]



PLANCHA



PLANCHA DLX-HW



SUPREME



SUPREME DLX



SUPER

HEAVY WEIGHT IRON SPECIFICATIONS

1. ISI
2. Power-750w
3. Operating Voltage: 220 – 240 Volts
4. Cast Iron Sole Plate
5. Heavy Weight
6. Super Clean Surface Finish
7. Cool Touch Handle With Comfortable Grip
8. Reliable Snap Action Thermostat
9. One Year Warranty.

Domestic Light Weight Iron



Vallabh[®]

LTC[®]

ARMY[®]



MAJESTIC



PLANCHA DLX-LW



QUEEN



MAGIC

LIGHT WEIGHT IRON SPECIFICATIONS

1. ISI
2. Nonstick coated sole plate
3. POWER-750w
4. Operating Voltage: 220 – 240 volts
5. Light weight
6. Super clean surface finish
7. Cool touch handle with comfortable grip
8. Reliable snap action thermostat
9. One year Warranty



Vallabh®

LTC®

ARMY®

Hand Blender

200W



SPECIFICATIONS

- | | |
|---------------------------------------|----------------------------|
| 1. One Year Warranty on Motor | 7. Low Noise Design |
| 2. Operating Voltage: 220 – 240 Volts | 8. Less Moving Parts |
| 3. Power-200 W | 9. Multi Functional Blade |
| 4. Single Piece Design | 10. Hanging Hook |
| 5. No More Breaking Couplers | 11. Easy One Touch Control |
| 6. Hygienic Stainless Steel | |



Vallabh®

LTC®

ARMY®



Hand Blender

250W

SPECIFICATIONS

1. One Year Warranty on Motor
2. Power-250 W
3. Single Piece Design
4. No More Breaking Couplers
5. Hygienic Stainless Steel
6. Low Noise Design
7. Less Moving Parts
8. Multi Functional Blade
9. Hanging Hook
10. Plastic Tumbler
11. Easy One Touch Control



CHOPPER

The Little Wonder of Your
Kitchen

SPECIFICATIONS

- One Year Warranty On Motor
- Power-225 W
- Operating Voltage: 220 – 240 Volts
- Small Compact Size
- Extra Spatula For Easy Cleaning
- Extra Lid For Preserving Food
- Capacity 400 ml
- Food Grade Transparent PC Bowl For Clear Visibility
- Push Start, Whisking Disk
- Rust-resistant Stainless Steel Blade
- Non-slip Ring For Stability





MIXER GRINDER

SPECIFICATIONS

- One year warranty on motor
- POWER-500 W
- Operating Voltage: 220 – 240 volts
- 5 liter liquidizing jar for blending, whipping, and mixing. Refer to the product description for details.
- 5 liter jar for dry and wet grinding, making batters, and gravies. Refer to the product description for details.
- 5 razor sharp stainless steel blades for multiple functions including mincing and chopping.
- 3-speed control knob that comes with 90 degrees range of movement.
- Bell-shaped body made of ABS plastic makes the outer surface heat and shock-proof, and also saves space.
- Cord winding facility allows for easy storage of the power cord.



Vallabh[®]

LTC[®]

ARMY[®]

Flying **INSECT** Killer

1, 1.5 & 2 FEET

Designed for Poultry Farms, Dairy Farms, Restaurants, Sweet Shops & Hospitals etc.





SPECIFICATIONS

FLYING INSECT KILLER 2 FEET

Designed for Poultry Farms, Dairy Farms, Restaurants, Sweet Shops & Hospitals etc.

- Power Consumption: 40 W
- Operating Voltage: 220 – 240 volts
- Fitting: Wall/Ceiling
- Machine Size: 25" x 7" x 14" (LxWxH)
- Fitted with MOSFET Protected Electronic choke
- Tubes: 2 Nos. X 18W
- Effective Area: Open Area: 300 Sq. Ft.
- Closed Area: 600 Sq.ft



SPECIFICATIONS

FLYING INSECT KILLER 1.5 FEET

Specially designed for Cafeterias, Snack bars, Food courts, Restaurants, Hospitals & Sweet shops.

- Power Consumption: 30 W
- Operating Voltage: 220 – 240 volts
- Fitting: Wall/Ceiling
- Machine Size: 19.75" x 5.5" x 11" (LxWxH)
- Fitted with MOSFET Protected Electronic choke
- V.Tubes: 2 Nos. X 15W
- Effective Area: Open Area: 250 Sq. Ft.
- Closed Area: 500 Sq.ft



SPECIFICATIONS

FLYING INSECT KILLER 1 FEET

Specially designed for domestic purposes, small corporate offices bakery Shops, Ice cream parlor and Fast food corner.

- Power Consumption: 20 W
- Operating Voltage: 220 – 240 volts
- Fitting: Wall/Ceiling
- Machine Size: 13" x 3.5" x 12" (LxWxH)
- Fitted with OSRAM Electronic choke
- V. Tubes: 2 Nos. X 8W
- Effective Area: Open Area: 150 Sq. Ft.
- Closed Area: 300 Sq. Ft

Vallabh[®]

LTC[®]

ARMY[®]

KE  **KRISHNA ELECTRICALS (REGD.)**

APPLIANCES DIVISION, INDIA

 Dardi Colony, Near Aggarsain Chownk, Samana Distt. Patiala (Pb)

 +91-9815004833 | +91-9888040512 | +91-9590000032

 www.krishnaappliances.com

 krishnaelectricalappliances@yahoo.com